



House & Land Package

From **\$1,663,300***

Summit 4160

4 Beds | 3.5 Baths | 3 Car Garage

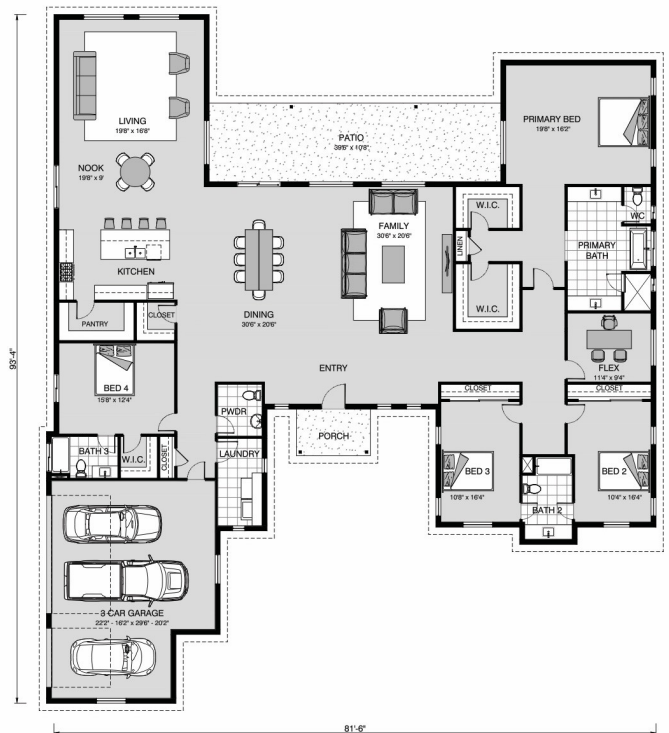
8027 Gardner Rd, Tampa

Land Area: 1 ac

Contact **Athena Gembutis** on **8139433947**

Inclusions:

- + Additional Paver Driveway \$7,500.00 Allowance (Due to 50' Front Road Setback)
- + Well \$10,000.00 Allowance
- + Additional Impact/Permit Fee \$15,000.00 Allowance (Due to Hillsborough County High Impact Fee Cost)
- + Septic System \$20,000.00 Allowance
- + Land Listed By: Carlos Patino. Contact agent directly for land inquiries: 813-446-1704. MLS ID: #T3538067. Asking Price for the 1 Acre Lot is \$550,000.00.



NOTE: Images may depict landscaping and upgraded fixtures, features, facades or finishes and other items which are not included in the prices stated or not supplied by G.J. Gardner Homes. For availability and pricing of these items please discuss with your new home sales consultant.



Package price is based on Summit 4160 standard floor plan and standard elevation (may be smaller than elevation shown). Package may be subject to developer's design review panel, final regulatory approval and G.J. Gardner Homes purchase processes. Package price excludes any taxes, legal fees, and closing costs. Prices are current as of September 16, 2024. Prices may change without notice. Packages are subject to availability. Package subject to two separate contracts relating to the building and the land respectively. Photographs may depict fixtures, finishes and features not supplied by G.J Gardner Homes. Excluded items include but are not limited to landscaping items such as planter boxes, retaining walls, water features, pergolas, screens, driveways and decorative items such as fencing and outdoor kitchens or barbeques. Photographs may also depict inclusions not forming part of the standard design and which may be subject to additional costs. This design and illustration remains the property of G.J Gardner Homes and may not be reproduced in whole or in part without written consent. For detailed home pricing, please talk to a New Homes Consultant or visit our website at <https://www.gjgardner.com/house-and-land-pricing/>. HP FL Construction LLC d.b.a G.J. Gardner Homes - Tampa North. Builders License CBC1256810.